

Adiga oo lagaa baarayo jeermiska laga yaabo in uu diido qalajiyayaasha

Jeermiska diidaya qalajiyayaasha weli way ku yaryihiin isbitaalada Norway. Sidaas darteed, isbitaalada Norway waxay leeyihiin sharciyadooda gaarka ah ee baaritaanka bukaanada iyo xirfadlayaasha caafimaadka ee ka yimid wadamada jeermisyo noocaas ah ay ku badanyihiin.

Qaadaayaasha inta badan ee jeermiska gaarka e noocaas ah malahan aastaamo ah in ay leeyihiin noolayaashaan/ jirka, iyo malahan cawaaqiib ee caafimaadkooda gaarka ah ee ah in jeermisyadaan ay jiraan. Baaritaanada waxaa inta badan loogu talo galay in ay ka hortagto faafinta jiro dhab ah iyo bukaanada aadka u nugul ee isbitaalka ku jira.

Warbixinta ku saabsan tijaabada

MRSA (caabuqa jeermiska jirka)

Qaar ka mid ah jeermisyadaan waxaa laga helaa sanko iyo dhuunta/ dalqada, iyo waxaa laga tijaabiyaa iyada oo la gelinayo suuf yar si tartiib ah loo marinayo sanko iyo dhuunta gadaal. Jeermiska waxaa sidoo kale laga heli karaa maqaarka ku dhow dabada, sidaas darteed, tijaabo u dhiganta jeermiska ayaa laga qaadaa maqaarka aaga xubinta taranka (aaga u dhaxeysa dabada iyo xubinta taranka).

VRE iyo ESBL

Qaar kamid ah jeermisyadaan waa jeermiska mandhiciirka iyo waxaa laga helaa sida qeyb ka ah jeermiska dabiiciga ah ee caloosha ku jira/xiriirka mandhiciirka. Sidaas darteed, si loo helo jeermisyadaan waa in aan ka qaadnaa tijaabada jeermiska dabada.

Tijaabada si taxadar ah ayaa looga qaadaa gudaha dabada iyada oo la isticmaalayo marin suuf ah.

Tijaabada kaadida iyo tijaabadaa dhaawaca sidoo kale waa la qaadi karaa, haddii aad qabtid kuwaan.

Lagu cabiraa isbitaalka adiga oo sugayo natiijooyinka baaritaan dhamestiran

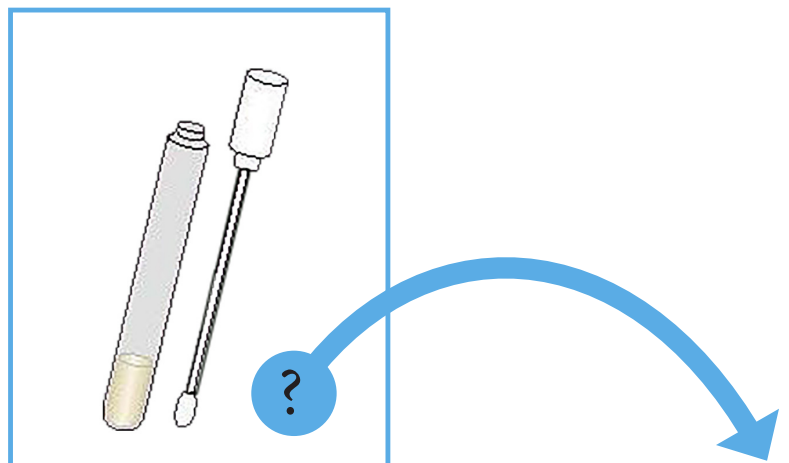
Dhaqaatiirta iyo kalkaalisoooyinka waxay ku isticmaalayaan qalab ilaaliyo (gacangashi, waji dabool iyo jaakad) gudaha qolka baaritaanka si looga hortago faafida jeermiska ee bukaanada kale ee isbitaalka ku jira.

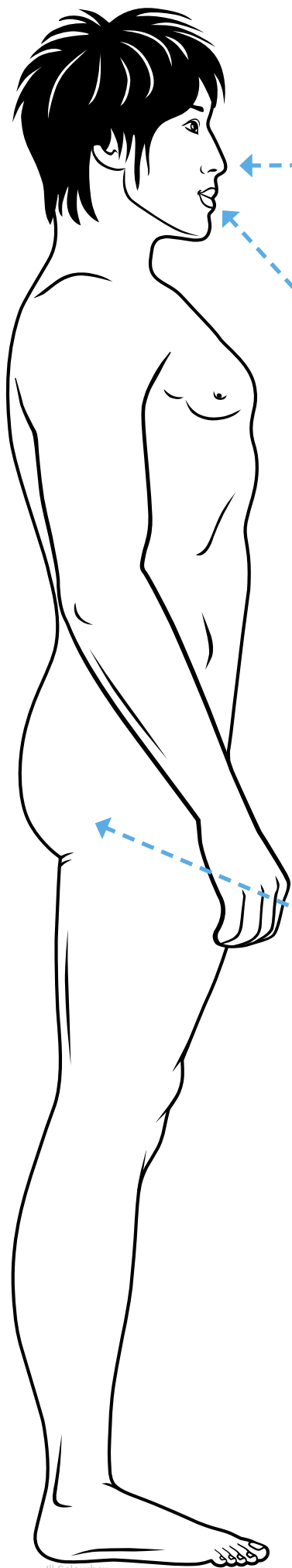
Qaar kamid ah waaxyada isbitaalka waxaad heleysaa qol gooni ah, iyo waxaa jiro sharciyo ku saabsan sida aad ugu socon kartid isbitaalka.

Xirfadlayaasha caafimaad waxay ku soo ogeysiinayaan haddii tijaabadaada ay wanaagsantahay.

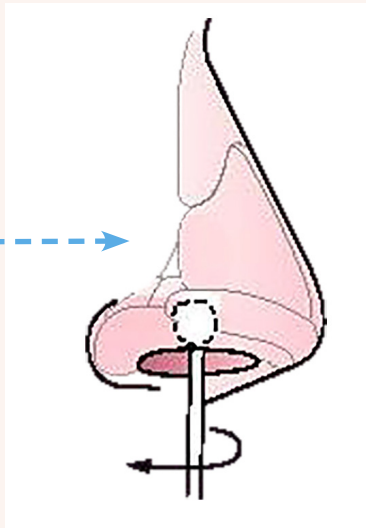
Tani waxay qaadan kartaa ilaa 3 maalmood.

1. Sanka
2. Dhuunta
3. aaga u dhaxeysa dabada iyo xubinta taranka

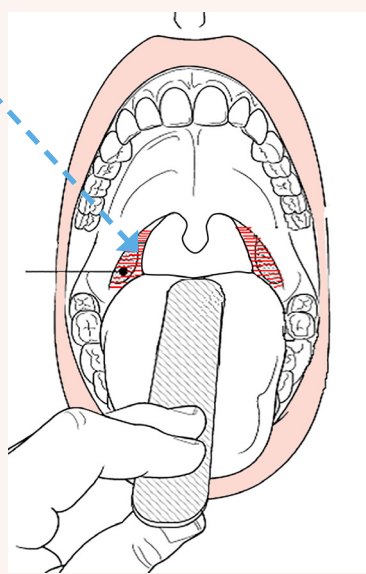
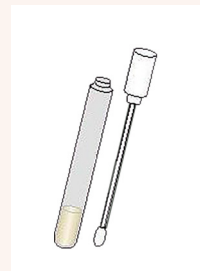




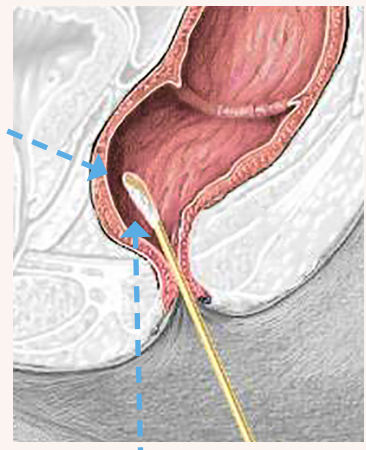
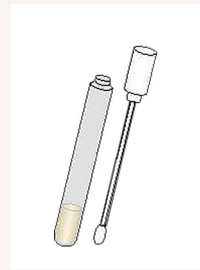
Ill. Colourbox



1



2



3

