



Ambix *activ*

Parenteral pumpe for
mobil bruk



Ambix *activ*

Ambix activ er laget for parenteral ernæring i hjemmemiljø.

Ambix activ skal ikke brukes til infusjon av insulin og potente legemidler.

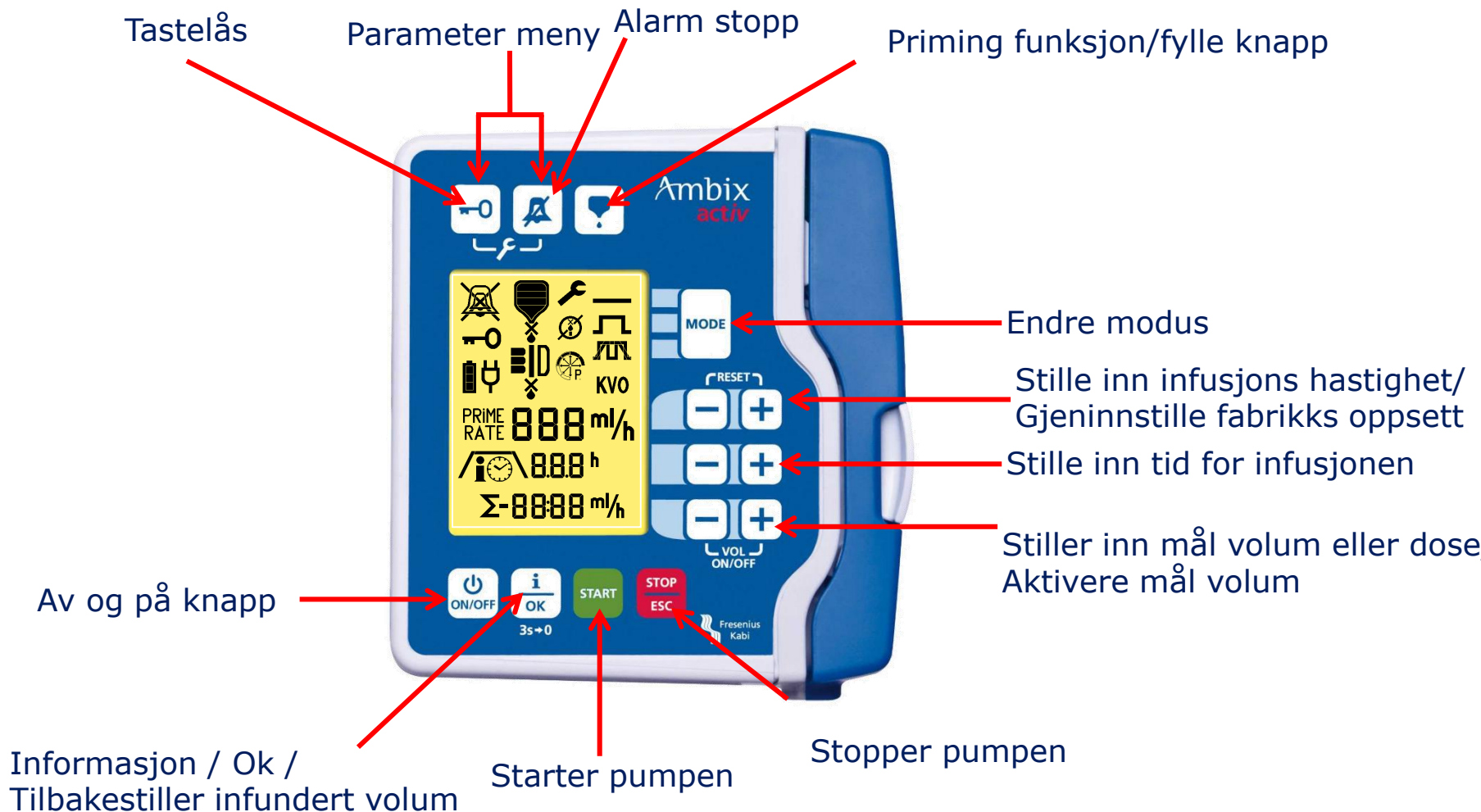
Ambix activ er beregnet på barn og voksne, skal ikke brukes på spebarn.

Dette er en hurtig guide, den erstatter ikke brukerveiledningen. Det anbefales å lese brukerveiledningen i sin helhet.

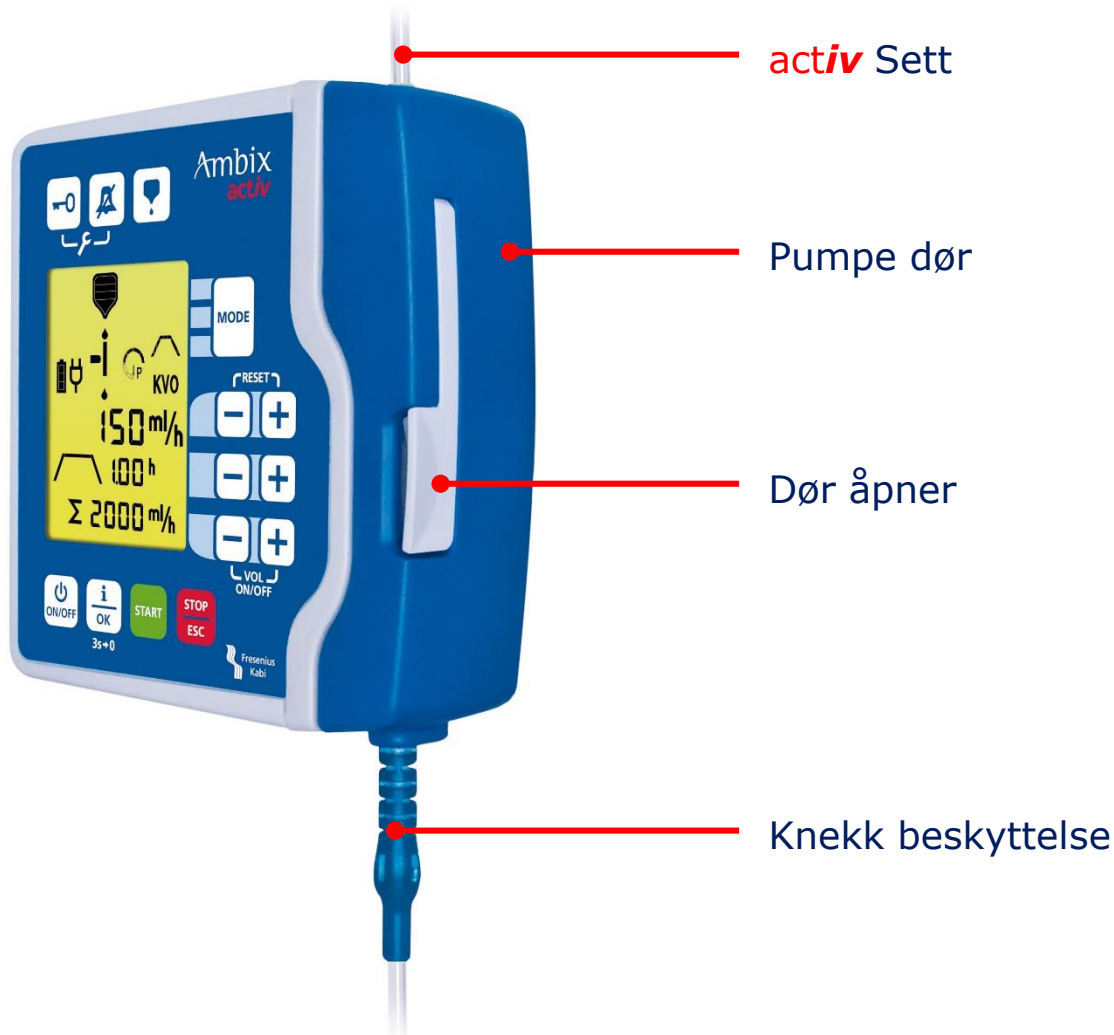
Infusjonshastighet	10 – 600 ml/t intervaller på 1 ml/t opp til 100ml/h intervaller på 5 ml/t fra 100 – 600 ml/h
Volum	0 – 9.999 ml
Infusjons tid	1 t – 24 t
KVO hastighet	0 – 10 ml/t
Volum infundert	0 – 9.999 ml
Nøyaktighet	+/- 5 %
Trykk	0,5(375 mmHg) og 0.8(600mmHg) bar
Batteri tid	40t @ 125ml/t
Modus	Kontinuerlig, Volum/Tid, Ramp(TPN), Periodisk

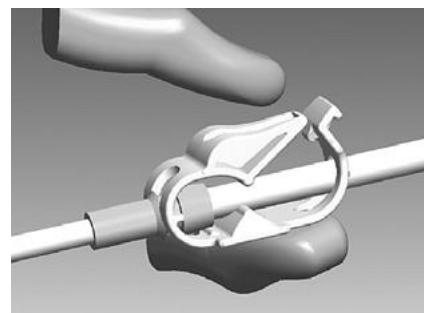
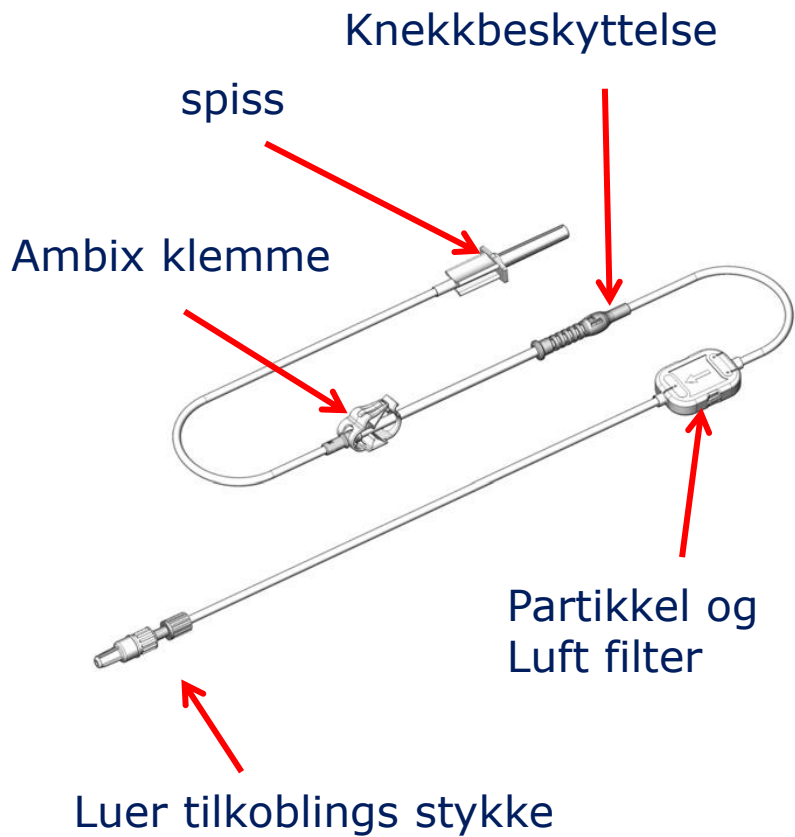


Knapper

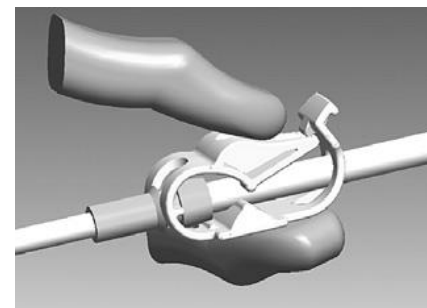


Ambix *activ* oversikt

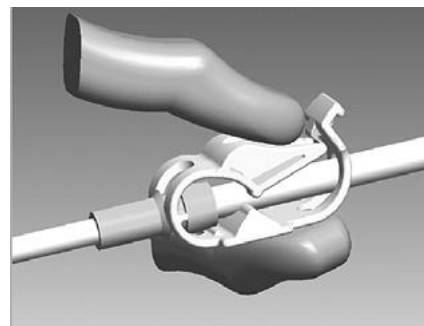




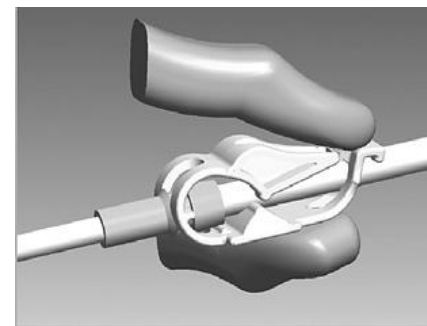
Åpne



Lukke



Åpne 1



Åpne 2

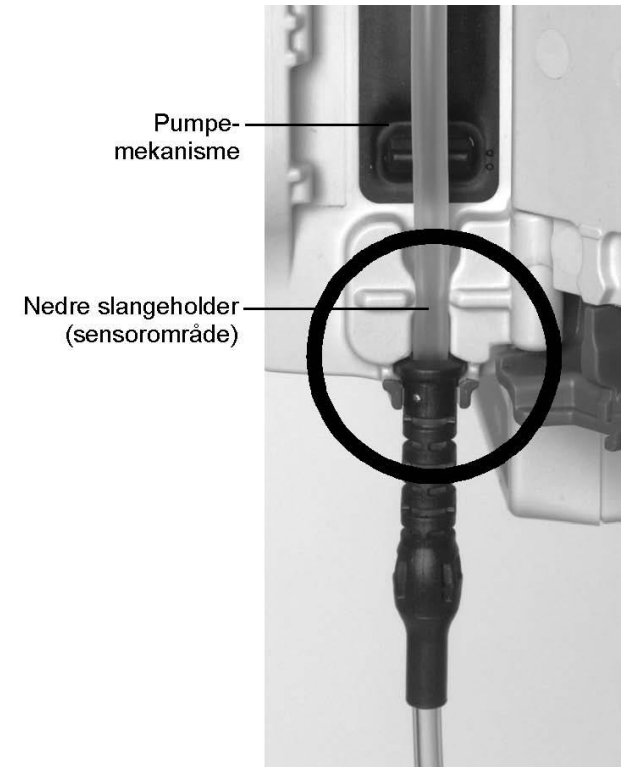
Manuell fylling

- Lukk activ klemmen.
- Koble beholderen til settet og heng den opp.
- Hold partikkel/luft filteret i pilens retning for å få en sikker og rask fylling av settet. Luften elimineres også raskere i denne retningen. Etter fylling eliminerer filteret luft i alle retninger.
- Åpne activ klemmen for å fylle settet.
- Lukk activ klemmen når settet er fullt og installer det i pumpen.

- For mer utfyllende opplysninger om fylling av sett se i bruksanvisningen, side 14 for manuell og 16 for fylling ved bruk av pumpen
- Fyll aldri settet når det er tilkoblet pasient.

Installasjon av sett

1. Åpne døren med hendelen
2. Før den grønne delen av activ-klemmen inn i den grønne delen av pumpen og trykk den inn.
3. Sett den øvre ringen på den blå knekk beskyttelsen inn i det blå hakket som visst på bildet til høyre
4. Lukk døren og trykk hendelen ned. Activ klemmen åpnes automatisk når pumpen startes, og lukkes når du åpner pumpedøren.

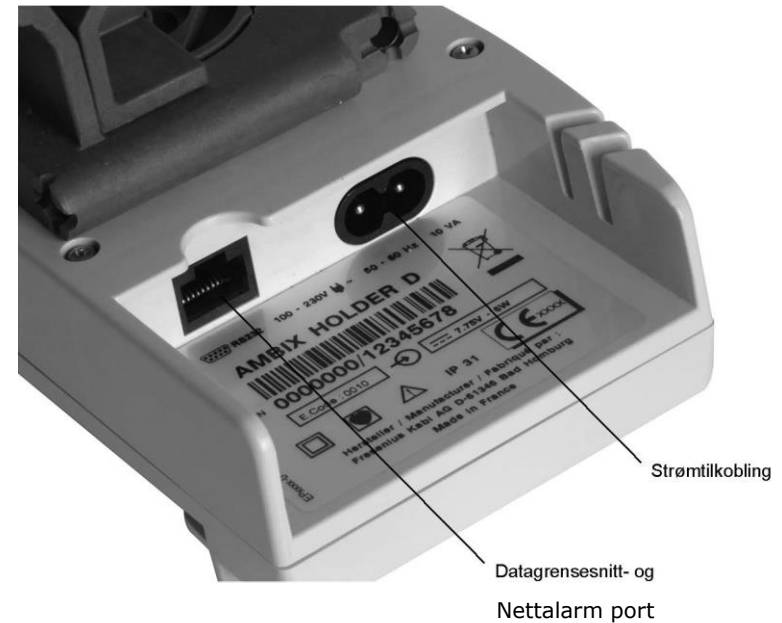
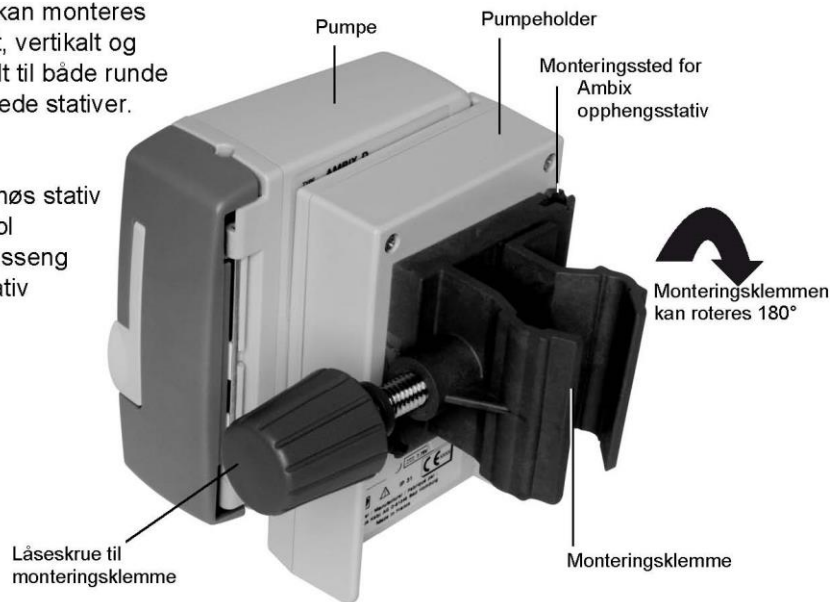


Ambix *activ* oversikt

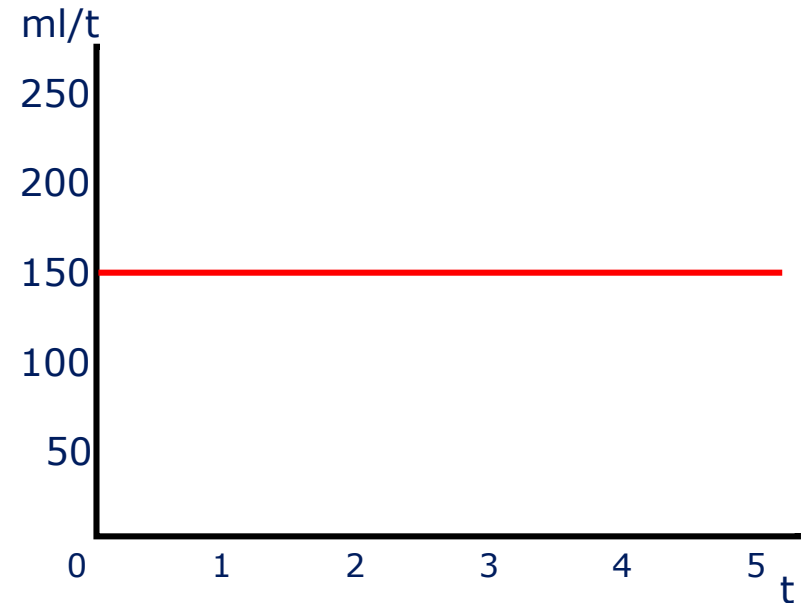
Pumpen kan monteres universalt, vertikalt og horisontalt til både runde og firkantede stativer.

f.eks.:

- Intravenøs stativ
- Rullestol
- Sykehusseng
- Bordstativ



Program – kontinuerlig



Knapp

ON/OFF

MODE

Øvre +/-

START

Funksjon

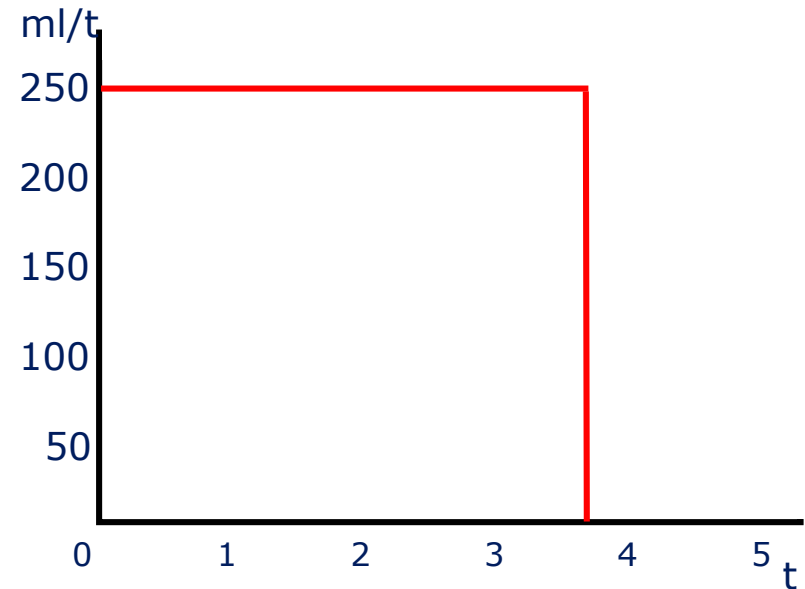
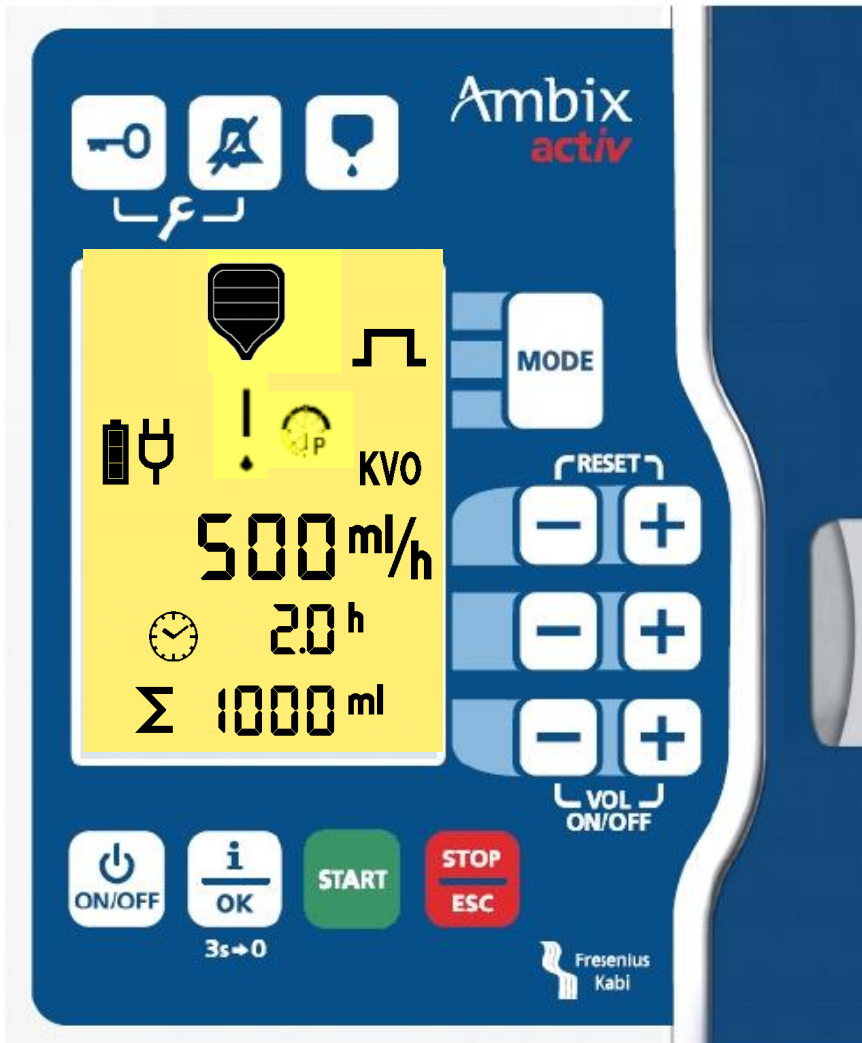
Slå på pumpen

Endre til kontinuerlig modus

Stille inn infusjons hastighet

Starter pumpen

Program – volum/tid



Knapp

ON/OFF

MODE

Nedre +/-

midtre +/-

Infusjons hastighet kalkuleres av pumpen

START

Funksjon

Slå pumpen på

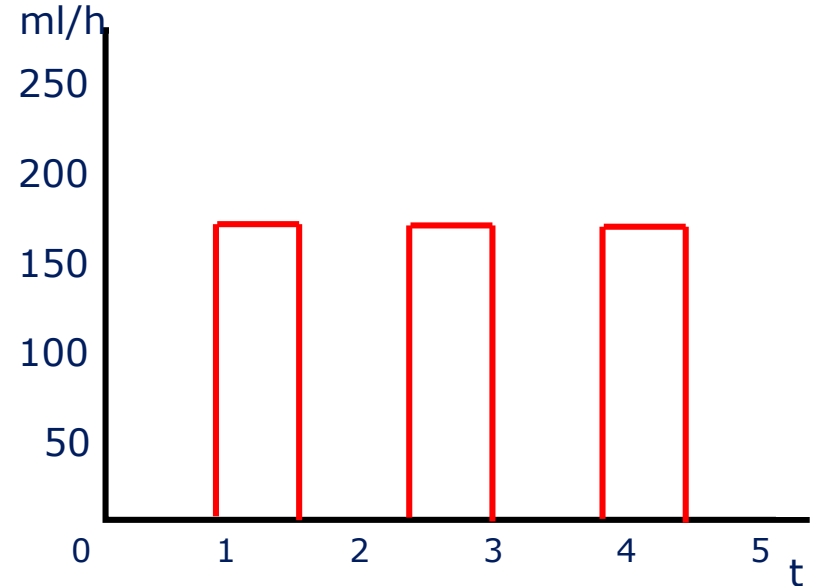
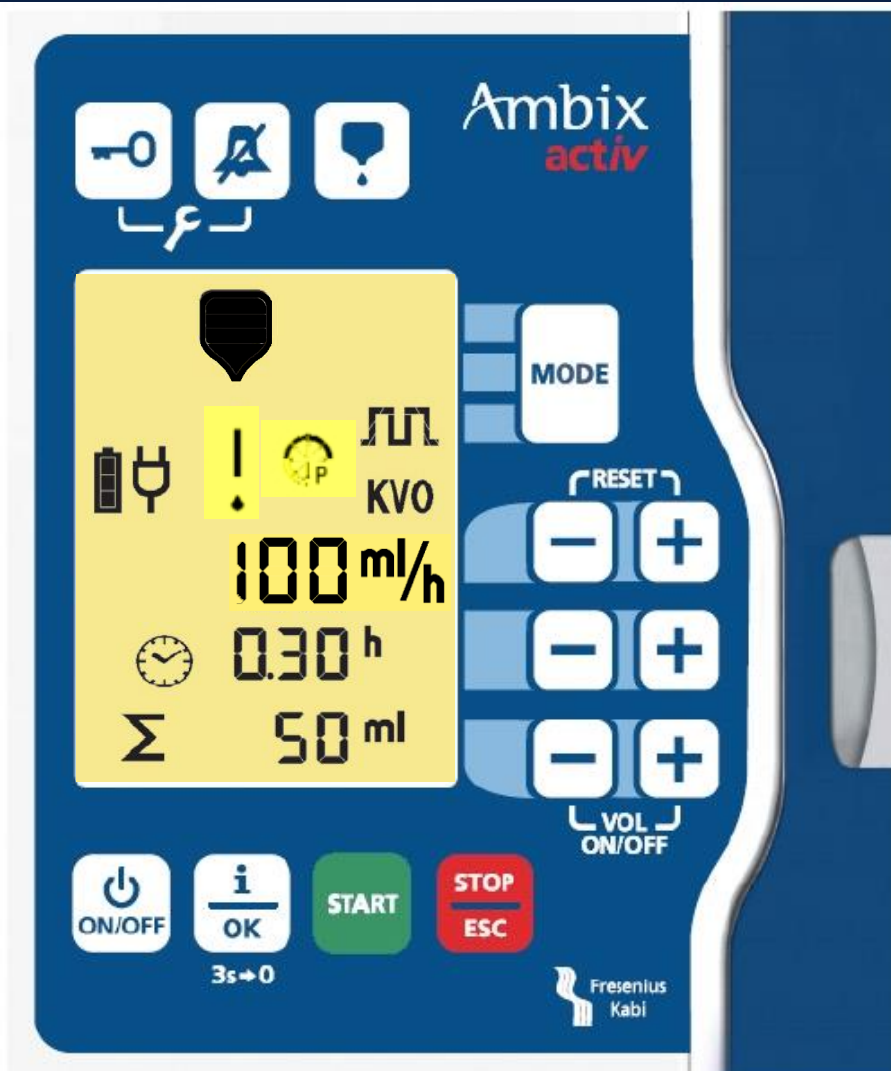
Endre til V/T modus

Stille inn mål volum

Stille inn infusjons tid

Starter pumpen

Intermittent Mode



Knapp
ON/OFF
Mode

Øvre +/-

Midtre +/-

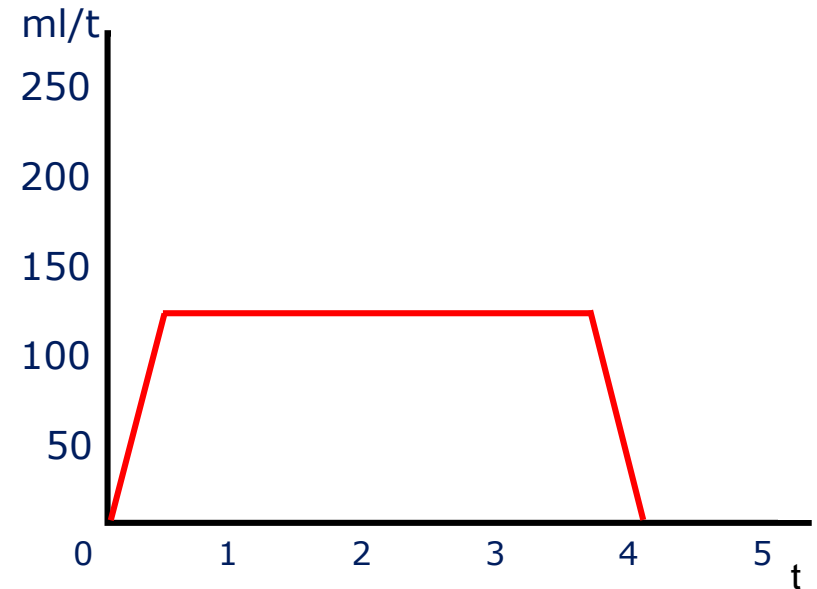
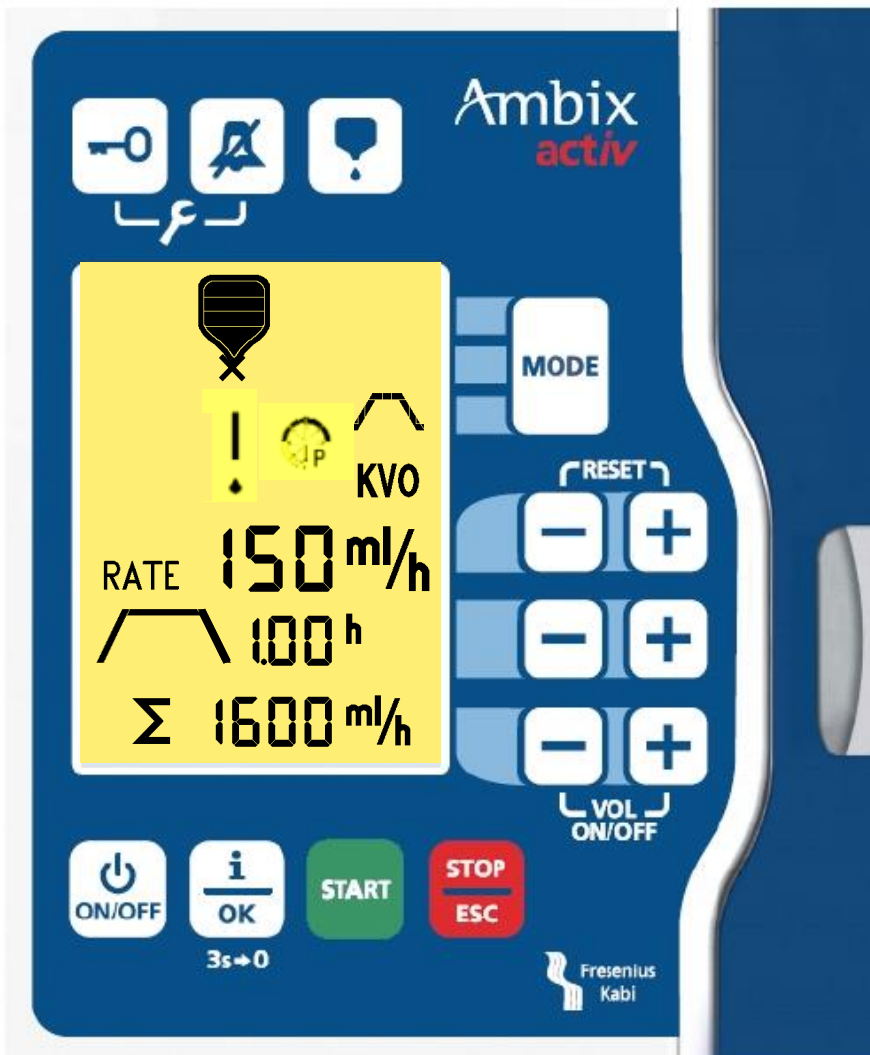
Nedre +/-

START

Funksjon

Slå pumpen på
Endre til ramp
intermitterende modus
Velg mellom dose innst
(doS), intervall innst(int)og
startforsinkelse(dS)
Still inn dosetis, intervalltid
og startforsinkelse
Still inn dosevolum og
antall intervaller
Starter pumpen

Program – TPN (Ramp funksjon)

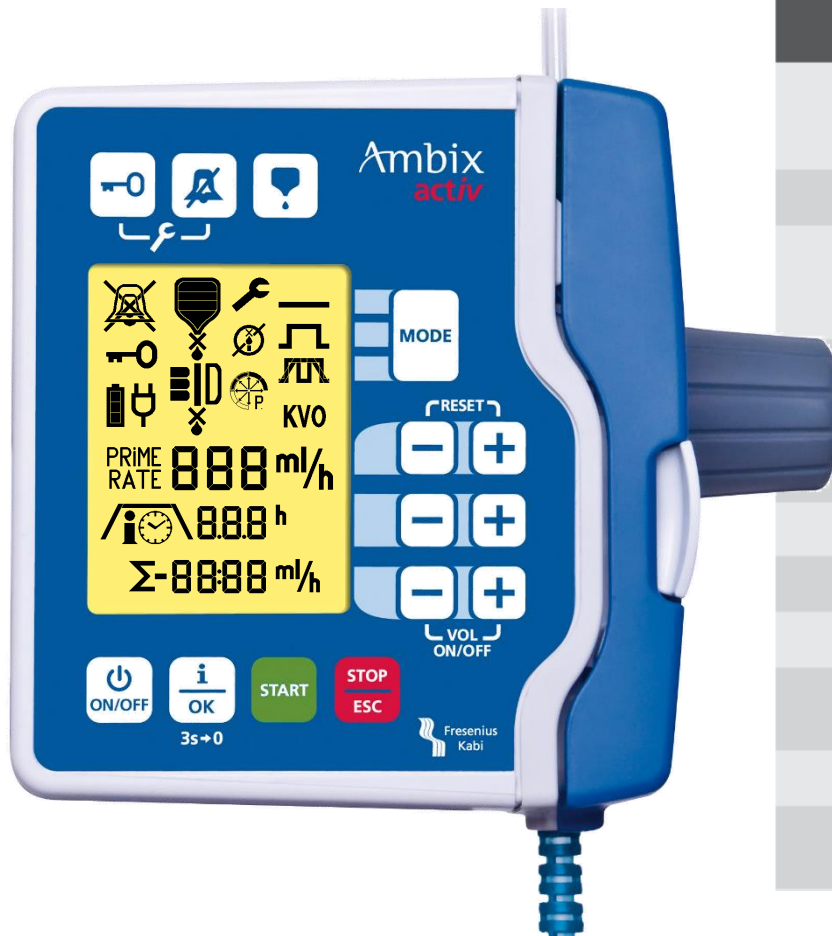






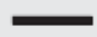





Knapp
ON/OFF
Mode
Øvre +/-

Midtre +/-
Nedre +/-
START

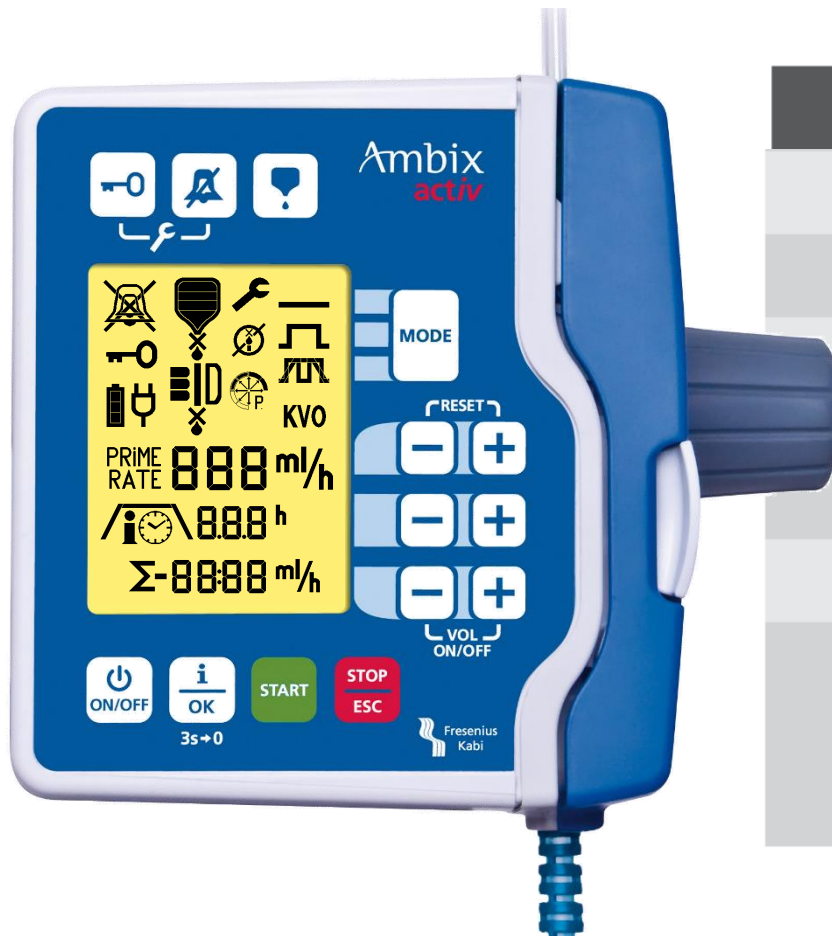
Funksjon
Slå pumpen på
Endre til ramp modus
Still inn opptrapping,
nedtrapping og total tid
Still inn ramp tid
Still inn mål volum
Starter pumpen








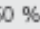
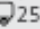


Display symboler



Display Symbol	Meaning	Further details
	Auditory alarm volume level	Indicates the volume of the alarm 🔕 silent, 🔊 low, 🔊 medium, 🔊 high (see parameter setting menu p. 20)
	Keypad locked	Keypad lock is active
	Blinking : Maintenance requested	Pumped volume > 1000 litres
	Keep Vein Open mode	KVO function is activated and target volume selected; if this symbol is flashing, KVO is running (see parameter setting menu p. 19)
	Continuous mode	Continuous mode is active
	Volume/Time mode	Volume/Time mode is active
	Ramp mode	Ramp mode is active
	Active ramping phase	Active phase of the ramping procedure will blink
	Priming mode	Pump is priming
	Battery charging status	charging status of the internal battery pack (🔋 empty battery, 🔋 fully charged battery)

Display symboler



Display Symbol	Meaning	Further details
	Information mode	Mode dependent information will be displayed
	Volume remaining to infuse	Remaining volume will be displayed
	Time threshold	Time thresholds should be programmed
	Pressure indication	Current pressure. If the arrow reaches the black area of the circle, occlusion alarm will be triggered
	Volume remaining to be administered	Volume remaining to be administered  75 %,  50 %,  25 %,  0 %
	Run indicator	The movement of drops and bars indicates that the pump is running
		

FRESENIUS KABI NORGE AS
Gjerdrumsvei 12
0484 Oslo
Tel: +47 22 58 80 00